

2026-04-10 • VERSION 5.0



Port Regulations



Innehållsförteckning

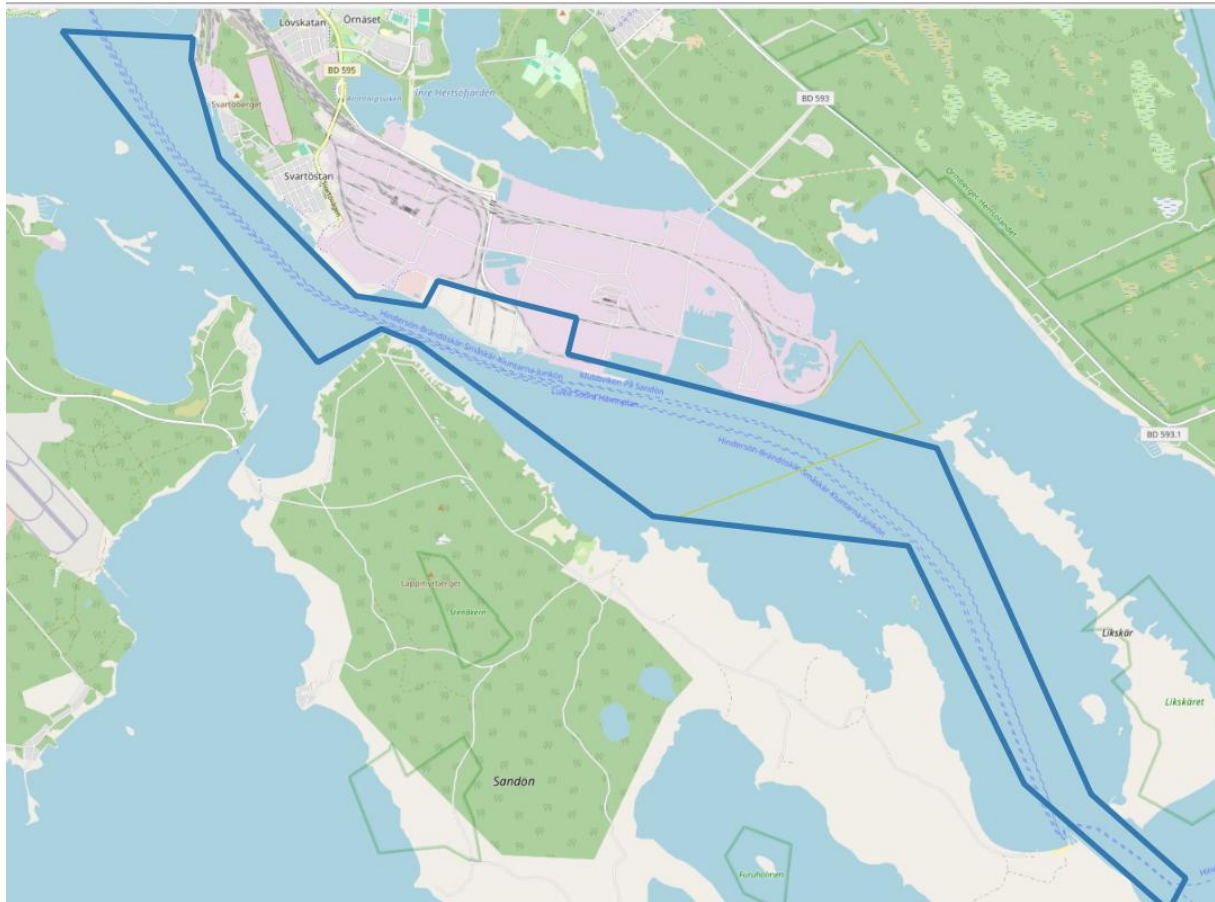
- Definitioner3
 - Terms and conditions4
 - Contact with Port of Lulea4
 - Radio Communication6
- General Environmental and Safety Regulations.....6
 - General6
 - Alcohol, Drugs, and Smoking.....7
 - Noise and Odour.....7
 - Discharges into Water7
- ISPS Port Security9
 - Maritime Security and Port Security9
 - Video Surveillance10
 - Access to the Port10
 - Declaration of Security (DoS).....10
- Advance Notification12
 - Ship Notification12
- Berthing Order.....12
 - Vessel Berthing12
 - Vessel Allocation13
 - Mooring.....13
 - Gangway14
 - Vessels Berthing in the Port14
 - Cranes14
 - Lifeboats14
 - Tugboat Service14
 - Tug Assistance for Non-Pilotage Vessels16
 - Anchoring in the Port.....16
- Vessel Services16
- Loading, Unloading, Storage of Cargo, etc.16
 - Dangerous Goods in Packaged Form17
- Notifications and Permits19
 - Diving.....19
 - External Maintenance Work Onboard19
 - Immobilisation19
 - Hot work on board ships.....19

Dry cargo ports and tankers.....20

Bunkering.....20

Procedure in Emergency Situations22

Appendix 1: Geographical Municipal Port Area



.....23

Appendix 2: General Port Area Boundary24

Definitioner

DoS Hamnen	Declaration of security, The port: the geographical area marked on the map attached to the port regulations (Appendix 1)
IMDG	International Maritime Dangerous Goods
IMO	International Maritime Organization
ISPS	International Ship and Port Facility Security Code
MSW	Maritime Single Window
PCB	Polychlorinated Biphenyls
PFSO	Port Facility Security Officer

PORT
PSO
TSFS

Ports system of Port of Luleå
Port Security Officer
Swedish Transport Agency regulations

Terms and conditions

To ensure safe and efficient operations within the Port of Luleå, the following port regulations apply. These regulations are based on the current Port Ordinance for Luleå Hamn AB and are binding for all parties operating within the port area. The current Port Ordinance is available on the Port of Luleå's website.

For a clear understanding of the port's geographical scope, all concerned parties are referred to the attached map showing the boundaries of the Port of Luleå. The map includes all facilities, land areas, and water areas covered by the Port Ordinance.

The port regulations apply to activities related to vessel operations and cargo handling within the Port of Luleå. Terminal operators and other stakeholders must be familiar with these regulations and ensure that subordinate or contracted personnel are informed of and comply with them.

Additional rules and areas of application for vessel operations are specified in the terminal information available on the Port of Luleå's website.

Contact with Port of Luleå

Port Authority

Luleå Hamn AB

Port ID Number: 20490

Visiting Address – Port Office

Luleå Hamn AB

Strömörvägen 9

SE-974 37 LULEÅ, Sweden

Switchboard (office hours): +46 (0)920 45 68 00

Website: <https://portlulea.com>

Port Control

Office hours: +46 (0)920 45 68 02

Email: portcontrol@portlulea.com

PSO (Port Security Officer) – Luleå Port:

Anna Josefsson

Phone: +46 (0)920 45 68 04

Email: anna.josefsson@portlulea.com

Deputy PSO:

Phone: +46 (0)70 325 12 87

Email: TIB@portlulea.com

Security Level in the Port: Level 1

Radio Communication

Call channel VTS-Luleå: VHF kanal 14

Luleå Hamn Position: 65°32'.8N 22°15'.5E'	
UN Locator code	SELLA
Victoriahamnen, inkl. Strömörpiren	0016
Uddebo Energihamn	0017
Sandskär	0018
Svartökajen	0019
Cementa	0020
Södra Hamn	0021

General Environmental and Safety Regulations

General

All activities within the port area, both on land and on board vessels, must be carried out in accordance with applicable laws, regulations, and permits. Cargo or other materials must not be placed in a way that obstructs access for emergency vehicles, blocks mooring bollards, or impedes fire hydrants.

Personal protective equipment (PPE) must be used in accordance with current instructions and occupational health and safety regulations. Refer also to the specific terminal information for further guidance.

Alcohol, Drugs, and Smoking

Port of Lulea is a port security area under the Port Security Act and includes port facilities (so-called ISPS areas) in accordance with the Maritime Security Act.

Port of Lulea enforces a zero-tolerance policy on alcohol and drugs. This means that it is strictly prohibited to consume alcohol and/or use drugs within the port area. It is also forbidden to be under the influence of alcohol and/or drugs, or to bring or store alcohol and/or drugs within the area. Random alcohol and drug tests may be conducted on anyone present within Port of Lulea premises.

Smoking is only permitted in designated areas. When provisioning alcohol, this must be pre-notified in Port as a goods delivery, and the contents must be specified in the notification. Smoking is strictly prohibited within the Energy Port.

Noise and Odour

Emissions of soot, smoke, steam, etc., from vessels must be minimized and must not cause inconvenience or obstruct other activities within the port. Odours resulting from vessel operations must also be minimized.

Vessels must ensure that noise and smoke emissions from main engines, auxiliary engines, boilers, ventilation systems, and any other equipment are kept to a minimum. Main engines should only be used for the time necessary to maneuver the vessel.

Moored vessels must comply with any specific noise requirements that may apply to individual berths.

Discharges into Water

No polluted water may be discharged within the port area.

Scrubber

The use of scrubbers for exhaust gas cleaning is only permitted when operated in closed-loop mode.

It is prohibited to discharge water from scrubbers (exhaust gas cleaning systems in open-loop mode) within the port area. The prohibition is based on Section 33 of Ordinance (1980:789) on measures against pollution from ships, as well as the Swedish Transport Agency's decision to ban discharges from scrubbers in open-loop mode

Ballast water

Only clean ballast water may be discharged in the port. "Clean ballast water" refers to water that meets the quality standards of the Ballast Water Management Convention and applicable Swedish legislation.

If oil contamination is detected or suspected, the vessel's commanding officer is responsible for ensuring that the discharge is immediately stopped. It is not permitted to discharge ballast water onto the quay, cranes, or any other facility/equipment.

Malfunction of Ballast Water Treatment Equipment

In the event of a malfunction of the vessel's ballast water treatment system, the discharge of ballast water must be stopped immediately.

If the vessel experiences technical problems with the equipment and, for specific reasons, needs to discharge untreated ballast water, the following actions must be taken:

1. Contact the Swedish Transport Agency – The vessel must contact the Swedish Transport Agency to apply for an exemption to discharge untreated ballast water.
2. Inform the Port – The vessel or its agent must inform Luleå Port if such an exemption has been granted.

ISPS Port Security

Security Level in the Port: Level 1

If any activity potentially related to security concerns is detected, the security function must be contacted immediately. This includes suspicious persons near port facilities, theft, breaches of access regulations, etc. Be vigilant for incidents and behaviors that deviate from the normal situation.

The PFSO (Port Facility Security Officer) or the port facility's security responsible person will notify the vessel and the Port Security Officer if there is a need to change the vessel's security level.

Each Port Facility is responsible for and controls access points to port facilities within the port area. The master is responsible for the vessel and must identify all persons coming onboard.

All visitors must be pre-notified to Port Security by the master. All ship supplies must be pre-notified and accompanied by verification documentation before being brought onboard. The crew is responsible for the inventory of goods.

Vessels operating at a security level higher than 1 must notify Port Control via the ship's arrival notification prior to arrival, stating the current security level. The notification must specify whether the elevated level is declared by the master or the flag state.

ISPS-classified vessels are only permitted to berth at ISPS-classified port facilities. Exceptions may be granted by the Port Authority in cooperation with the Swedish Transport Agency.

Maritime Security and Port Security

The port facility operator shall ensure that maritime security assessments and plans are kept up to date and comply with EU Regulation 2004/725/EC as well as national laws and regulations concerning maritime security. The Port Authority shall have oversight of the plans for the port facilities included in the port security framework to enable the port security organization and the Port Security Officer to conduct port security assessments and develop port security plans according to the relevant laws and regulations.

The port facility's PFSO (Port Facility Security Officer) shall participate annually in exercises conducted within the framework of the Port Security Act.

The port facility shall also consider whether it is classified as a critical infrastructure facility and designated as a civil protection object.

The port facility must ensure that security measures are appropriately adapted to meet the security needs of each respective terminal. The port facility operator holds the overall decision-making authority over the terminals in matters related to security concerning port security, maritime security, and civil protection objects/critical infrastructure facilities.

Video Surveillance

The port area is under video surveillance. In the event of an incident, recorded footage will be reviewed.

For more information regarding the handling of recorded material, please refer to the Luleå Port website.

Access to the Port

Anyone present within the port area must be able to prove their identity and/or present a valid access permit. The following forms of identification are accepted: Swedish driver's license, national ID card, or passport.

Only authorised personnel are permitted within the port facility in accordance with the Maritime Security Act, the Port Security Act, and, where applicable, the Protective Security Act.

Those normally authorised to be present within the port facility include the vessel's crew, the terminal's port and stevedoring personnel, mooring crews, the cargo owner's carrier, and visitors approved by the master of the vessel.

When entering the boundary of the port facility or cargo area, any unplanned movements must always be pre-notified to the terminal in accordance with the instructions of the respective terminal.

Escorting within the port area and advanced notification.

People who do not hold a valid access permit for the port area or port facility may only remain within the area under escort by an authorized party. Escorting shall take place from the access gate to the vessel or the relevant port facility, as well as upon exit.

All escorted entries to and exits from the port area must, as a general rule, be pre-notified 60 minutes prior to the intended passage, in accordance with the current instructions of the port and the respective terminal.

Declaration of Security (DoS)

The PFSO (Port Facility Security Officer) must be contacted if a vessel requests the exchange of a Declaration of Security (DoS).

A port facility shall request that a DoS be established in the following situations:

- If the vessel is operating at a higher security level than the port facility.
- If the vessel has previously been in contact with a port facility that did not have an approved security plan.
- If the vessel is engaged in ship-to-ship operations with another vessel that does not hold an International Ship Security Certificate (ISSC).

- If the port facility has reason to believe that the vessel does not comply with the provisions of the Maritime Security Act.

Advance Notification

Ship Notification

All vessels subject to mandatory reporting that intend to call at or pass through Port of Luleå must submit a ship notification in MSW (Maritime Single Window) no later than 24 hours prior to arrival. The Port Authority may, based on the vessel's voyage time or other circumstances, allow for a shorter notice period.

If the vessel is not subject to mandatory MSW reporting or for other reasons wishes to make an earlier notification, this can be done through the port's PORT system, subject to approval.

Berthing Order

The basic principle is that vessels arriving first at the pilot station are taken into the terminal, provided that the vessel notification has been submitted in accordance with applicable regulations and that:

- The vessel is ready for loading or discharging
- The terminal is ready to commence operations
- A Notice of Readiness (NOR) has been tendered in accordance with the applicable charter party for loading vessels

Deviations from this principle may be made for special reasons, for example:

- Risk of production disruption due to low inventory levels
- Dedicated berth for a specific vessel

Vessels are brought alongside the berth in connection with the commencement of loading or discharging. Vessels awaiting a berth are primarily assigned to an anchorage, but may in some cases be allocated a temporary berth.

For cargo handling, the terminal operator shall be notified in connection with transport booking to enable resource planning.

Vessel Berthing

Vessels may not moor in the port without the permission of Port Control.

Port Control shall receive the following information from the terminal:

- Berth
- Planned vessel position at the berth
- Vessel priority if several vessels are dedicated to the same berth
- Information on planned or ongoing maintenance affecting the relevant berth (cranes, loading arms, etc.)

- Telephone number to the duty vessel planner

The terminal shall continuously coordinate vessel berthing plans with Port Control and also report deviations in ongoing loading and discharging operations via Port Control.

Vessel Allocation

Vessels are not permitted to berth in the port without prior authorization from Port Control.

The terminal must provide Port Control with the following information:

- Berth assignment
- Planned vessel position along the quay
- Vessel priority, if multiple vessels are assigned to the same berth
- Information on planned or ongoing maintenance affecting the berth (e.g., cranes, loading arms, etc.)
- Contact number for the on-duty vessel planner

The terminal must continuously coordinate berth allocation planning with Port Control and report any deviations in ongoing loading or unloading operations via the Port system.

Mooring

During the port stay, vessels must be kept securely moored at all times. Mooring lines should be kept well tensioned and adjusted as needed.

The terminal is responsible for ensuring that bollards on the quay are available in such a way that vessels can moor safely. Mooring plans are provided in the terminal information.

Mooring personnel will place signal lights on the bollards during arrivals to assist in vessel positioning.

VHF radio communication must be used by all parties involved during both arrival and departure mooring operations.

Mooring Personnel

Mooring personnel operating within Luleå Port must have completed documented training in accordance with the IMO “Guidelines for minimum training and education for mooring personnel” FAL.6/Circ.11 of 11 July 2005 or equivalent training, and the company must hold liability insurance.

During mooring operations (vessel arrival, departure, or shifting), approved mooring personnel from the terminal must be engaged.

Orders for mooring personnel are made through the respective terminal operator.

Gangway

Vessels berthed in the port are required to provide a suitable gangway to enable safe access between the vessel and the shore, complete with safety nets.

The gangway's position must not obstruct operations on the quay.

Vessels Berthing in the Port

Vessels must at all times be ready to move under their own power on short notice. Exceptions may be granted by Port Control and may be subject to conditions.

Vessels that are not loading or unloading are not allowed to remain in the port without permission from Port Control.

Cranes

Upon vessel arrival and departure, cranes must be positioned at least 50 meters forward and aft of the vessel.

Cranes must not be operated or swung over vessels that are maneuvering to or from the berth. The boatmen give clearance to the stevedores and/or the vessel once all mooring operations are completed, so that crane movement/loading/unloading can commence.

Boatmen must not release mooring lines while loading or unloading operations are ongoing. Additionally, the crane trolley must be placed in the parking position.

Lifeboats

Lifeboats, rafts, or free-fall lifeboats may not be lowered into the water without permission from Port Control during drills.

In the Energy Terminal (Energihamnen), permission must also be obtained from the terminal. Nautisk information

Tugboat Service

Regulations for tugboat assistance in Luleå Port have been developed in consultation with the Swedish Maritime Administration (Sjöfartsverket) and provide information on the number of tugboats required for vessel arrivals and departures at Luleå Port.

The calculation of the number of tugboats is based on normal current conditions and wind speeds up to 10 m/s.

Under adverse current conditions and wind speeds exceeding 10 m/s, additional tugboats may be required beyond those specified. The pilot, in consultation with the vessel's master, determines on a case-by-case basis whether a planned vessel operation can be conducted with sufficient safety margins.

Changes to Luleå Port's tugboat regulations are made in coordination with the Swedish Maritime Administration, Luleå Pilot Area.

In accordance with Section 18 of the Port Regulations, the Port Authority may require tugboat assistance.

More information about tugboat regulations can be found on the Luleå Port website.

Tug Assistance for Non-Pilotage Vessels

For vessels not subject to compulsory pilotage, the Port Authority – as the party responsible for safety and port infrastructure – recommends that a pilot be engaged when tug assistance is required.

Anchoring in the Port

Vessels are not permitted to anchor or drag anchors in the Sandö Channel or near quay facilities within the Port of Luleå. Anchoring within the port always requires permission from Port Control and may only take place after confirmed approval. Any unauthorized anchoring must be reported to Port Control immediately.

Vessel Services

Fresh Water

Information and regulations regarding the supply of fresh water are provided in the terminal information.

Provisions

Delivery of provisions and other supplies must be carried out with consideration to ongoing loading and unloading operations. A representative from the vessel must be given the opportunity to inspect the delivery before it is brought into the port facility. When provisioning alcohol, this must be pre-notified in Port as a goods delivery, and the contents must be specified in the notification.

Waste

Refer to the respective terminal information and Waste Folder for each terminal.

Loading, Unloading, Storage of Cargo, etc.

Cargo handling

Loading, unloading, transport, and storage of cargo, vehicles, or other materials may only take place under the direction of authorized personnel.

Cargo handling must be carried out in a safe manner so that no damage occurs to the port's facilities or equipment, and no risk is posed to personnel. The permitted ground pressure must not be exceeded. After cargo handling is completed, the work area must be restored. Cleaning may be required if necessary.

Cargo, vehicles, or other materials must not be placed on evacuation routes or in areas that obstruct emergency vehicle access. Neither may they obstruct mooring bollards.

Specific instructions may apply to cargo handling within individual terminals.

Dangerous Goods in Packaged Form

The terminal must contact Port Control as early as possible when handling dangerous goods in packaged form. Dangerous goods should be brought into the port for loading as late as is practicably possible and must be removed from the port as soon as possible after unloading. Explosive substances classified as Class 1 and radioactive materials in Class 7—except for the categories 1.4 S, 1.2 G, 1.3 G, 1.4 G, and non-labelled Class 7—are only permitted to enter or exit the terminal during the time the vessel is actively being loaded or unloaded, in order to avoid any storage outside of this period. Loading of dangerous goods must begin as soon as possible after the goods have entered the terminal, and entry of such goods should take place as close to the vessel's departure as is practically feasible. Exceptions allowing temporary storage outside of these timeframes may be granted on a case-by-case basis for transport safety reasons. It is important to note that storage of dangerous goods is not permitted within the port; only handling as part of the transportation process is allowed.

Marking and Labelling

Within the port, all packages and cargo units containing dangerous goods must be marked and labelled in accordance with the regulations of the applicable mode of transport.

Dangerous goods involving maritime transport must always be marked in accordance with the IMDG Code.

The port operator reserves the right to stop the transport of dangerous goods if complete documentation or proper marking cannot be presented, or for any other reason that may pose a safety risk.

Handling and Storage

The terminal must present a storage plan for dangerous goods, approved by the fire and rescue services, to the port operator.

A dangerous goods declaration or other relevant information must be available to authorities, emergency services, and terminal staff for the duration the goods are present at the terminal, to ensure immediate emergency response if needed.

Any accident or incident involving dangerous goods must be reported immediately to the emergency services.

Special Notification

For larger quantities of dangerous goods, or goods that may pose specific risks or involve a large number of items with the same UN number, the terminal must contact Port Control well in advance, regardless of whether the goods will be handled within the Port of Luleå or are in transit.

Storage

Storage of dangerous goods is not permitted within the Port of Luleå—only handling as part of the transport process is allowed. Cleaning of dangerous goods containers/tanks may only take place at an authority-approved location with proper facilities for hazardous waste disposal. Storage or depot holding of empty, non-cleaned dangerous goods containers/tanks is strictly prohibited.

Notification of Dangerous Goods Arriving by Road and Rail

Dangerous goods arriving at the port by land (road or rail) must be pre-notified to the relevant terminal in accordance with applicable regulations.

Notifications and Permits

All notifications and permit requests must be submitted to Port Control via the Port system. The exception applies to notifications and permit requests that concern only the terminals—these matters must be reported directly to the respective terminal. This exception does not apply to vessel-related matters.

Diving

Diving is only permitted with authorization from Port Control. Divers must hold a professional certificate and be certified for the specific type of diving work to be performed. The responsible diving supervisor must ensure compliance with the following points:

Permission or changes must always be obtained from Port Control.

Port Control must be informed before and after each diving operation (a diving permit may be valid for a longer period, but Port Control must be notified at each diving occasion).

The diving supervisor is responsible for staying updated on vessel traffic to and from the relevant quay where diving is taking place.

International maritime traffic regulations, port regulations, and port rules must be followed.

External Maintenance Work Onboard

External repair and maintenance work on vessels moored at the quay must not commence without permission from Port Control. Note that any work causing spills (such as paint residues, cleaning agents, wash water, etc.) that directly or indirectly enter the harbor basin is strictly prohibited.

Immobilisation

For work that causes the vessel to be unable to move under its own power or be moved at all, permission must be obtained from Port Control. Such permission may be subject to conditions. Rundkörning av framdrivningspropeller

The ship's propellers may only be used for maneuvering; any other use requires special permission from Port Control.

Hot work on board ships

For temporary hot work on board ships, the ship's master or a person appointed by the master is responsible for fire safety and ensuring that safety regulations (for Swedish ships, the SBF safety regulations apply) are followed, including issuing permits for temporary hot work.

If the hot work is to be carried out in areas where stevedoring operations are ongoing or in the immediate vicinity of the terminal, permission must be obtained from the terminal's coordination officer.

Dry cargo ports and tankers

Tankers are generally not allowed to call at dry cargo ports. Exceptions may be granted by Port Control, provided the vessel presents a valid entry certificate showing that it is gas-free. Upon arrival at a dry cargo port, and if work is to be performed on board, a work certificate issued by an approved external gas inspector is required. The external gas inspector shall:

Inspect spaces and tanks where there is a risk of explosive gases

Perform gas measurements in these spaces

Confirm that the vessel is gas-free, which means:

A maximum of 1% of the LFL (Lower Flammable Limit) for the relevant product

At least 21% oxygen content in the atmosphere

No traces of toxic substances such as benzene, hydrogen sulfide, or other harmful gases

Bunkering

Notification of bunkering must be made in Port. The notification shall include the following information:

The name of the receiving vessel

The name of the bunkering vessel or the loader/driver of the tank vehicle

The name of the bunker supplier

Time and place of bunkering

Quantity and product type

The person responsible for bunkering on the receiving vessel and the driver of the bunkering vehicle are obliged to take all necessary safety measures within their respective areas of operation to prevent the release of bunker oil into the external environment.

Bunkering from tank vehicles is not permitted during ongoing loading, unloading, or sampling of flammable goods with a flashpoint below 30 degrees Celsius on the receiving vessel.

Bunkering from tank vehicles is not allowed during ongoing loading/unloading if the receiving vessel has previously carried a flammable substance with a flashpoint below 30 degrees Celsius in cargo tanks or slop tanks to be used as cargo tanks unless tank cleaning has been performed and the receiving vessel is gas-free. A gas-free vessel must be certified with a gas-free declaration from the vessel or a certificate from an independent inspector.

Bunkering must not take place simultaneously with loading/unloading of Class 1 or Class 2 products.

LNG

Bunkering of LNG is permitted at the Sandskär terminal. For more information about procedures and conditions, please refer to the LNG Bunkering Operating Instructions.

Before pumping begins

The tanks vents (gooseneck vents) on the vehicle must be equipped with devices to prevent overfilling. The driver of the receiving vehicle shall inform the delivering vessel of both the maximum pump pressure that the waste can be received at and the quantity to be filled in each tank. The hose for discharging pumpable waste must be securely connected to the connection onboard the delivering vessel and rigged in such a way that it cannot be damaged by the vessel's movements. Only approved hoses tested within the last 12 months may be used. Spill trays must be placed under both the delivering vessel's and the receiving vehicle's manifold connections. It must be checked that all valves on the vehicle are set so that filling occurs into the correct tank. Hoses, pipelines, and the handling area must be well lit so that leaks can be detected. Secure communication must be established between the delivering vessel and the receiving vehicle. This communication shall continue until the discharge is completed and the hose disconnected.

During pumping

Hoses shall be continuously monitored for leaks. Throughout the entire discharge operation, the driver of the receiving vehicle and the safety watch on the delivering vessel must remain in a position where they can immediately order the pumping to stop. The level in the receiving tanks shall be continuously monitored.

After pumping is completed

After pumping is completed, hose connections shall be loosened in a way that prevents spillage of oily waste. Spill trays shall be used. Hoses without shut-off valves shall be fitted with blind flanges or secured blind plugs before the hoses are returned to the receiving vessel or vehicle.

In the event of spill

The following actions must be taken immediately

- Pumping shall be stopped.
- Valves on both the discharging vessel and the receiving vehicle shall be closed immediately.
- Alert emergency services by calling 112.

Procedure in Emergency Situations

The ship's fire protection equipment shall be in good condition and ready for immediate use.

The crew must be trained and well acquainted with its operation.

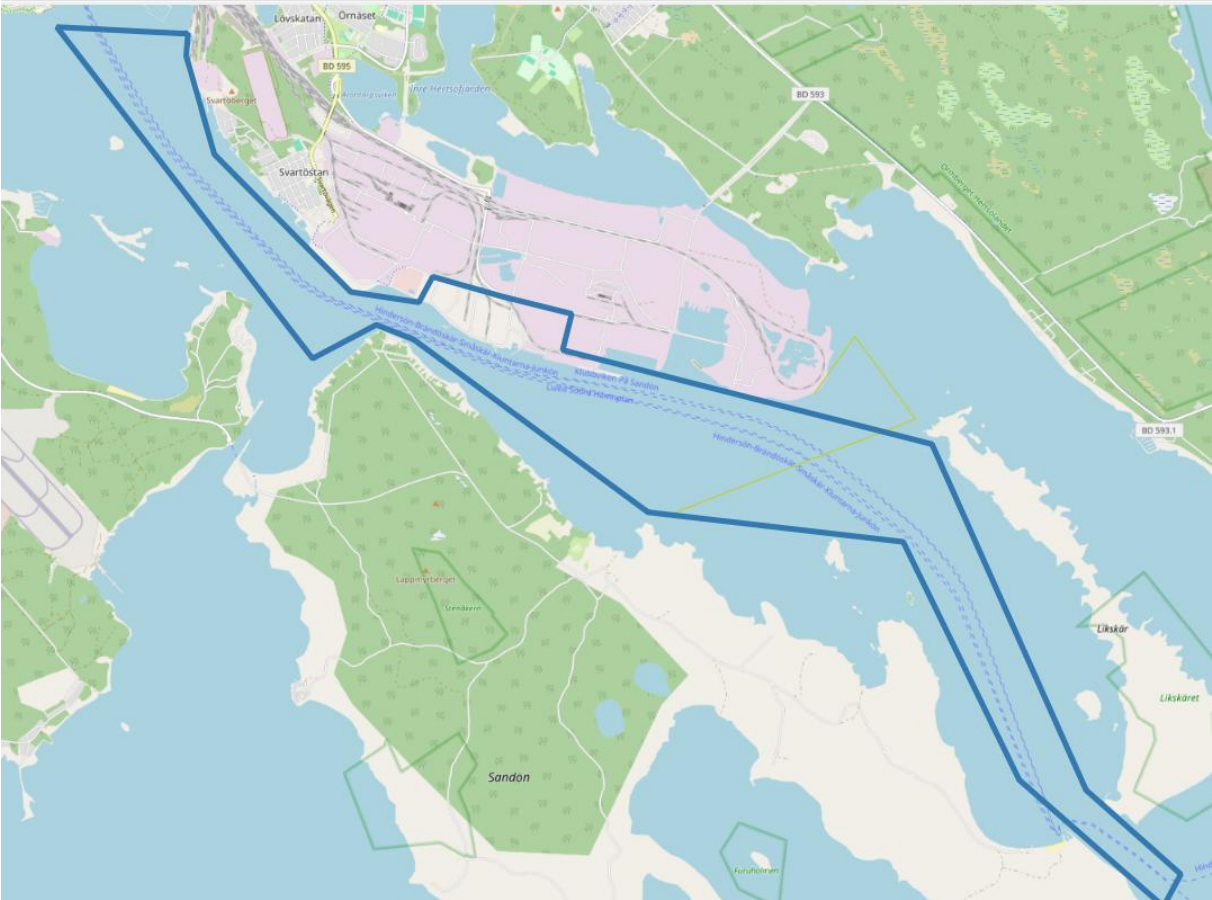
In case of an emergency, the alarm list according to Table 1 shall be activated.

Additional contact details and emergency procedures for each terminal are provided in.

Call order list

1.	Emergency call (police, ambulance, fire service)	112
2.	Sweden Rescue	VHF kanal 16
3.	Contact VTS LULEÅ	VHF kanal 14
4.	Duty officer Port of Lulea	+46 (0)70 325 12 87

Appendix 1: Geographical Municipal Port Area



Appendix 2: General Port Area Boundary

